



JERSEY FARM NEWS

SPRING 2025

JERSEY FARM RESIDENTS' ASSOCIATION

Welcome to the Spring edition of the Jersey Farm Residents' Association (JFRA) newsletter. With brighter days and the promise of new beginnings, spring is the perfect time to connect with your community.

In this edition, we bring you updates, events, and stories to help you stay informed and engaged with everything happening in Jersey Farm.

Mark Your Calendars: Events in Jersey Farm This Year!

Be sure to add these dates to your diary. We're looking forward to a year full of community spirit and fun. Watch out for more details in upcoming newsletters, posts on the JFRA Facebook page and posters on the community noticeboard outside Tesco.

Here's what's coming up this year:

SUNDAY MARCH 23	Spring Litter Pick An organised event open to everyone to help keep Jersey Farm clean and tidy	
SUNDAY APRIL 06	Easter Event Join us for an Easter themed Treasure Hunt & Easter Craft making event	
FRIDAY APRIL 25	JFRA (AGM) Annual General Meeting Come along and have your say and hear updates about our community	
TBA	Possible Summer Event <i>being considered</i>	
SUNDAY SEPTEMBER 14	Autumn Litter Pick Another chance to come together and care for our streets and green spaces	
SUNDAY DECEMBER 14	Christmas Event Join us for a Christmas treasure hunt, Christmas crafts and a chance to shop for unique, handmade gifts.	





#SHOP LOCAL



Supporting the Heart of Our Community

The **#ShopLocal** section is dedicated to shining a spotlight on the fantastic businesses that are the backbone of your community. These local gems not only provide essential services but also bring convenience and a personal touch to everyday life.

In this edition, we're featuring the Jersey Farm Chemist who offer much more than just a place to pick up prescriptions. Discover how this vital business supports your community and why it deserves a place on your list of go-to local stops.



Looking for friendly, reliable healthcare services in the heart of your community? Jersey Farm Chemist is here for you! They offer a wide range of services, including NHS and private prescription dispensing, over-the-counter medications, and health advice. Their convenient repeat prescription service, delivery service, and free blister pack service make managing your medications easy.

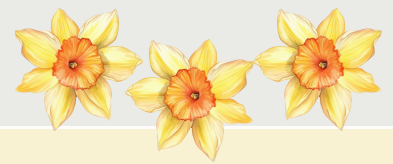
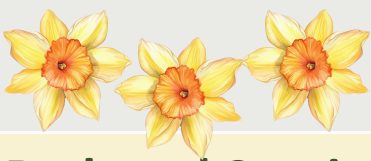
Their dedicated team also provides free blood pressure monitoring, private and NHS flu vaccinations, and travel health consultations and vaccinations to keep you and your family healthy.

Additionally, their **'Pharmacy First'** service allows patients to receive professional advice and treatment for seven common health conditions - sinusitis, impetigo, shingles, acute sore throat, uncomplicated UTIs in women, infected insect bites, and earache for those under 18 - all without a GP appointment, saving you time and offering you fast convenient care.

Located in the heart of Jersey Farm, they're your one-stop shop for expert health care and personal service. Visit them today! They're open at the following times:

Monday, Tuesday, Thursday, and Friday: 9:00 am to 6:30 pm
Wednesday: 9:00 am to 5:30 pm
Saturday: 9:00 am to 1:00 pm





Reduced Service at Marshalswick Post Office

Residents of Jersey Farm should note recent changes at The Quadrant Post Office in Marshalswick. The services it offers have been reduced and now mirror those already offered at Tesco Express in Jersey Farm.

Previously, the Quadrant Post Office provided enhanced services like parcel collection and passport applications which are no longer available at that branch. For these services and more, residents will now need to visit the Post Office in St Peter's Street in the city centre.

For more details of the services offered at each of the local and UK wide Post Offices, please visit www.postoffice.co.uk



Oaklands College Development - Have Your Say

Oaklands College plans to further develop its St Albans Campus with Taylor Wimpey, proposing new educational facilities and housing on nearby land. While the College highlights benefits like improved vocational education, residents may have concerns about traffic, green space, and local impact.



From the presentation session held in December, it became clear that the field adjoining the previous Oaklands Grange housing is proposed for further housing. This development is listed in the St Albans District Council Local Plan, making it likely to proceed.

JFRA committee members will attend future meetings to represent community opinions, so please email us at jerseyfarm@hotmail.com to let us know your thoughts so we can represent the views of the whole community.

New Pathway Around Harness Way Open Space

Sandridge Parish Council have recently completed a fantastic improvement to the Harness Way Open Space and playing field area, benefiting local residents and visitors alike.

Regular users will know how challenging the muddy paths could be, often discouraging use of the playing field, particularly in wet weather. However, that's now a thing of the past! In November, work was completed to create a new surfaced path around the Harness Way Open Space. The path provides a dry and accessible route, connecting Jersey Lane to the entrances off Cheriton Close and Harness Way, while also ensuring easier access to the playground.

This improvement means no more muddy boots or wellies which is a welcome upgrade for everyone who enjoys this community space.





Make a Difference in Jersey Farm



Support us with your Corporate Volunteering Day

Does your workplace offer corporate volunteering days? If so, why not use one to support a community event organised by the Jersey Farm Residents' Association? We're always looking for an extra pair of hands to help make our events a success.

There's no need to join the committee or commit long-term, just bring your enthusiasm and energy for a few hours to help support activities that benefit your local community. It's a great way to give back, meet new people, and make a real difference close to home.

If you're interested, please get in touch with us at jerseyfarm@hotmail.com. We'd love to hear from you!



Join JFRA as a Committee Member or Event Volunteer

Would you like to join the Jersey Farm Residents' Association? Whether you're interested in becoming a Committee member or volunteering on a regular basis to support our community events, we'd love to hear from you.

We're particularly keen to encourage diverse representatives from across Jersey Farm to ensure our activities reflect the needs and voices of everyone in our neighbourhood.

If you're interested in joining us or learning more, email us at jerseyfarm@hotmail.com or come and chat with us at one of our events. Let's work together to make a difference!



Stay Connected and get the latest JFRA News and Events

Facebook



Jersey Farm Residents Association, St Albans (JFRA) >

Private group · 1.8K members



Instagram



[@jersey.farm](https://www.instagram.com/jersey.farm)

Mailing List



To join simply email jerseyfarm@hotmail.com

